



TRANSPORTATION CABINET

Frankfort, Kentucky 40622
www.transportation.ky.gov/

Steven L. Beshear
Governor

Michael W. Hancock, P.E.
Secretary

November 18, 2015

CALL NO. 304
CONTRACT ID NO. 151077
ADDENDUM # 2

Subject: Wolfe County, FD04 SPP 119 0205 000-007
Letting November 20, 2015

- (1) Revised - Plan Sheet - U1
- (2) Revised - Bid Items - Pages 213-217 of 217

Proposal revisions are available at <http://transportation.ky.gov/Construction-Procurement/>.

Plan revisions are available at <http://www.lynnimaging.com/kytransportation/>.

If you have any questions, please contact us at 502-564-3500.

Sincerely,

A handwritten signature in cursive script that reads "Rachel Mills".

Rachel Mills, P.E.
Director
Division of Construction Procurement

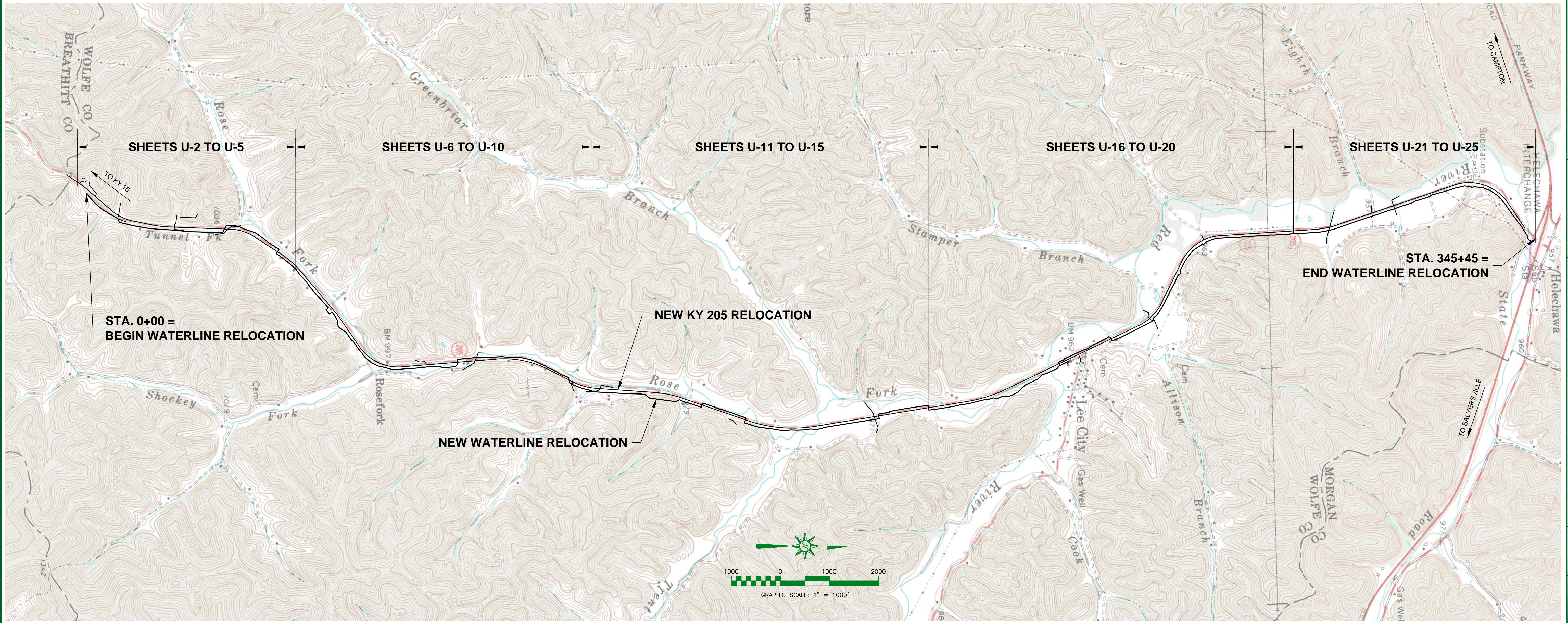
RM:ks
Enclosures



An Equal Opportunity Employer M/F/D

- GENERAL NOTES:
- CHANNEL CHANGE CONSTRUCTION (BY OTHERS) AT KY 205 STA. 110+20 TO 111+40, LEFT (SHEET U-2), STA. 111+75 TO STA. 114+00, LEFT (SHEET U-9), STA. 157+50 TO STA. 159+45, LEFT (SHEET U-12) AND STA. 159+50 TO STA. 164+50, LEFT (SHEETS U-12 & U-13); TO BE COMPLETED PRIOR TO PHASE 1 WATERLINE CONSTRUCTION.
 - PHASE 1 WATERLINE CONSTRUCTION; CONSTRUCT WATERLINES PRIOR TO THE RECONSTRUCTION AND WIDENING OF KY 205.
 - PHASE 2 WATERLINE CONSTRUCTION; CONSTRUCT AFTER THE RECONSTRUCTION AND WIDENING OF KY 205.
 - PROFILES HAVE BEEN PROVIDED FOR PHASE 1 WATERLINE CONSTRUCTION; NO PROFILES HAVE BEEN PROVIDED FOR PHASE 2 WATERLINE CONSTRUCTION.
 - UNLESS OTHERWISE NOTED WATERLINES SHALL HAVE A MINIMUM OF 30" COVER FROM FINAL GRADE TO TOP OF PIPE AND A MINIMUM OF 42" COVER IN AREAS LOCATED UNDERNEATH DITCHES AND ROAD CROSSINGS.
 - WHEN PHASE 2 WATERLINE CONSTRUCTION IS OPERATIONAL, PORTIONS OF PHASE 1 WATERLINE WILL BE ABANDONED.
 - ALL CHANGES IN EITHER VERTICAL OR HORIZONTAL DIRECTION, NEW VALVES, FITTINGS, HYDRANTS, ETC. TO HAVE MECHANICAL RESTRAINED JOINTS.
 - DIRECTIONAL DRILL SITES ARE LISTED AS LUMP SUM WITH AN APPROXIMATE LENGTH SHOWN IN HORIZONTAL FEET, CONTRACTOR SHALL INSPECT EACH SITE FOR SLOPE DIFFERENCES TO DETERMINE ACTUAL PIPE LENGTHS REQUIRED.
 - ALL DUCTILE IRON PIPE SHALL HAVE NITRILE GASKETS WHERE IT IS WITHIN 200 FEET OF AN EXISTING OR ABANDONED FUEL STORAGE TANK.
 - WATERLINE MARKERS ARE NOT SHOWN ON THE PLAN SHEETS AND WILL BE LOCATED IN THE FIELD FOR BEST VISIBILITY. THEY ARE TO BE SPACED NO MORE THAN EVERY 2,000 FEET ALONG THE PERMANENT WATERLINE ROUTE AND AT EACH OF THE MAIN WATERLINE ROAD CROSSINGS.
 - ALL SERVICE LINE SHALL BE HDPE CLASS 200.
 - DIMENSIONS OF EXISTING STRUCTURES, EQUIPMENT, ETC. SHALL BE FIELD CONFIRMED BY THE CONTRACTOR. WHERE CRITICAL DIMENSIONS FOR INSTALLATION OF PROPOSED EQUIPMENT ARE INDICATED ON THE DRAWINGS, THE CONTRACTOR SHALL CONFIRM THESE DIMENSIONS FOR ACTUAL EQUIPMENT FURNISHED. ALL KNOWN DISCREPANCIES SHALL BE REPORTED TO THE ENGINEER.
 - THE CONTRACTOR SHALL CONFINE ALL CONSTRUCTION ACTIVITY TO THE AREA WITHIN EXISTING EASEMENTS AND CONSTRUCTION LIMITS, UNLESS OTHERWISE APPROVED IN WRITING BY THE OWNER. THE CONTRACTOR WILL BE SOLELY LIABLE FOR ANY WORK HE PERFORMS OUTSIDE OF LEGAL EASEMENTS OR CONSTRUCTION LIMITS.
 - THE CONTRACTOR MUST CONTACT ALL UTILITY OWNERS AND HAVE THEM FIELD LOCATE THEIR EXISTING LINES PRIOR TO ANY CONSTRUCTION ACTIVITY.
 - EFFORTS HAVE BEEN MADE TO INDICATE ACCURATE LOCATIONS OF SOME EXISTING STRUCTURES, PIPING AND UTILITIES. HOWEVER THE CONTRACTOR SHALL FAMILIARIZE HIMSELF WITH THE SITE AND OTHER EXISTING CONDITIONS AND NOTIFY THE ENGINEER OF ANY DISCREPANCIES BETWEEN INFORMATION DEPICTED BY THE CONSTRUCTION DRAWINGS AND ACTUAL FIELD CONDITIONS WHICH WOULD SIGNIFICANTLY ALTER THE DESIGN INTENT OF THE CONSTRUCTION DRAWINGS PRIOR TO COMMENCING HIS CONSTRUCTION OPERATIONS. DIMENSIONS OF EXISTING STRUCTURES AND/OR SITE RESTRICTIONS ARE APPROXIMATE. IT IS THE CONTRACTOR'S RESPONSIBILITY TO OBTAIN AND CONFIRM ALL DIMENSIONS AND ELEVATIONS OF EXISTING STRUCTURES AND TOPOGRAPHY IN THE FIELD NECESSARY FOR HIS CONSTRUCTION OPERATION.
 - THE CONTRACTOR SHALL USE ALL POSSIBLE CARE DURING EXCAVATION ON THIS PROJECT SO AS NOT TO DESTROY OR DAMAGE ANY EXISTING UTILITY OR STRUCTURE NOT SCHEDULED FOR DEMOLITION WHETHER DEPICTED OR NOT IN THE CONSTRUCTION DRAWINGS OR ANY DAMAGE TO THE ABOVE MENTIONED ITEMS CAUSED DIRECTLY OR INDIRECTLY BY THE CONTRACTOR SHALL BE REPAIRED OR REPLACED BY THE CONTRACTOR AT NO COST TO THE OWNER TO A CONDITION EQUAL TO OR BETTER THAN THAT WHICH EXISTED PRIOR TO BEING DAMAGED.
 - THE CONTRACTOR SHALL CONTACT AND OBTAIN THE PERMISSION OF EXISTING UTILITY OWNERS 48 HOURS (MIN) PRIOR TO ANY CONSTRUCTION ACTIVITY INTERRUPTING OPERATION OF SAID UTILITY.
 - IT SHALL BE THE CONTRACTOR'S RESPONSIBILITY TO WORK ALL APPLICABLE DRAWINGS AND THE APPROPRIATE SPECIFICATIONS AS A UNIT. ANY OMISSIONS, DELETIONS OR CONFLICTS ARISING AS A RESULT OF FAILURE TO INCORPORATE ALL DRAWINGS AND SPECIFICATIONS WHICH APPLY SHALL BE CORRECTED BY THE CONTRACTOR AT NO ADDED COST TO THE OWNER.

KYTC #	PHASE 1 - Description	Item	U-2	U-3A	U-3B	U-4A	U-4B	U-5A	U-5B	U-6A	U-6B	U-7A	U-7B	U-8A	U-8B	U-9A	U-9B	U-10A	U-10B	U-11A	U-11B	U-12A	U-12B	U-13A	U-13B	U-14	Project	
			Quantity	Quantity	Quantity	Quantity	Quantity	Quantity	Quantity	Quantity	Quantity	Quantity	Quantity	Quantity	Quantity	Quantity	Quantity	Quantity	Quantity	Quantity	Quantity	Quantity	Quantity	Quantity	Quantity	Quantity	Totals	
14059	6" SDR17 PVC Waterline	LF	500	1,500	1,500	1,500	1,500	1,420	1,311	1,461	1,500	1,500	1,500	1,420	1,420	1,500	1,335	1,250	1,675	1,500	1,500	1,500	1,500	1,500	1,500	1,101	33,893	
14036	6" Ductile Iron Push-on Joint Waterline with Nitrile Gaskets	LF																	390							390		
14004	8" HDPE DR9 Waterline, Directional Drill Creek Crossing	LF						120	225	120				120	120			240	270							120	1,335	
14057	3" SDR17 PVC Waterline	LF							45																	45		
14085	3/4" HDPE Class 200 Service Line - Service Short Side 3/4"	EA	3	2	1	6	3	3	5	4	1	3	1	3	1	3	5	4	7			1			2	2	62	
14080	3/4" HDPE Class 200 Service Line - Service Long Side 3/4"	EA	1	1	1					1	1	1	1	2			1	1			1	2				1	16	
14008	10.75" Sch. 40 Steel Casing Pipe, Bore & Jack	LF			120	70				95	100		90	80				130	70	50						150	1,025	
14014	10.75" Sch. 40 Steel Casing Pipe, Open Cut	LF		20		20		80	20	20	120	20	50	20				80	20	30	20	40	40	20		20	0	640
14014	12" PVC Casing Pipe (includes carrier pipe), Open Cut	LF		130		50	95			35															20		330	
14001	3/4" Combination Air Release Valve Assembly	EA	1	1			1	1	1	1	1	1	1	1				1				1			1	1	17	
14022	Flush Hydrant Assembly, Type 1	EA	1		1				1	1				1								1					1	6
14105	6" D.I.M.J. Gate Valve & Box	EA	1	1	2		2	2	2	3	1		2	3	2	2	6	4	7	2	4			2	2	4	54	
14103	3" D.I.M.J. Gate Valve & Box	EA			1			1																			2	
14028	Water Meter	EA	4	3	2			1	1	2				1	1			2	2							1	20	
14130	Water Meter with Individual Pressure Reducer (IPRV)	EA				6	4	2	4	3	2	4	2	4			3	4	3	7	1	3		2	2	2	58	
14003	Cap Existing Main	EA																									1	1
14144	Waterline Marker	EA	1	1	2	2	1	1	1	2	1	1	2	2	1	4	1	2	2	2	1	1	1	1	1	3	36	
14094	6" Waterline Tie-In	EA																	1						1		1	3
14092	3" Waterline Tie-In	EA			1			1																			2	
			U-2	U-3A	U-3B	U-4A	U-4B	U-5A	U-5B	U-6A	U-6B	U-7A	U-7B	U-8A	U-8B	U-9A	U-9B	U-10A	U-10B	U-11A	U-11B	U-12A	U-12B	U-13A	U-13B	U-14	Project	
			Quantity	Quantity	Quantity	Quantity	Quantity	Quantity	Quantity	Quantity	Quantity	Quantity	Quantity	Quantity	Quantity	Quantity	Quantity	Quantity	Quantity	Quantity	Quantity	Quantity	Quantity	Quantity	Quantity	Quantity	Quantity	Totals
KYTC #	PHASE 2 - Description	Item																										
14059	6" SDR17 PVC Waterline	LF		1,120	1,055		115											295	965	265	325	205			60	4,405		
14036	6" Ductile Iron Push-on Joint Waterline with Nitrile Gaskets	LF																		195							195	
14080	3/4" HDPE Class 200 Service Line - Service Long Side 3/4"	EA	1							1																	2	
14001	3/4" Combination Air Release Valve Assembly	EA			1																						1	
14022	Flush Hydrant Assembly, Type 1	EA		1		1																					10	
14030	Water Meter Relocate	EA	2																								2	
14003	Cap Existing Main	EA		1	1		2											1	1	6	2	4			1		19	
	NOTE:																											



LAST PLOTTED: 11/18/2015
LAST SAVED: 11/18/2015 10:48:40

11-18-2015 REVISED UNITS AND QUANTITIES FOR DIRECTIONAL DRILL CREEK CROSSING

CITY OF CAMPTON WATERWORKS
WOLFE COUNTY, KENTUCKY
RECONSTRUCT AND WIDEN KY 205 10-8101.00
WATERLINE RELOCATION
OVERALL LAYOUT AND QUANTITIES

STATE OF KENTUCKY
WILLIAM
MCGREGOR
21863
LICENSED
PROFESSIONAL ENGINEER

nesbitt engineering, inc.
providing proven solutions since 1976

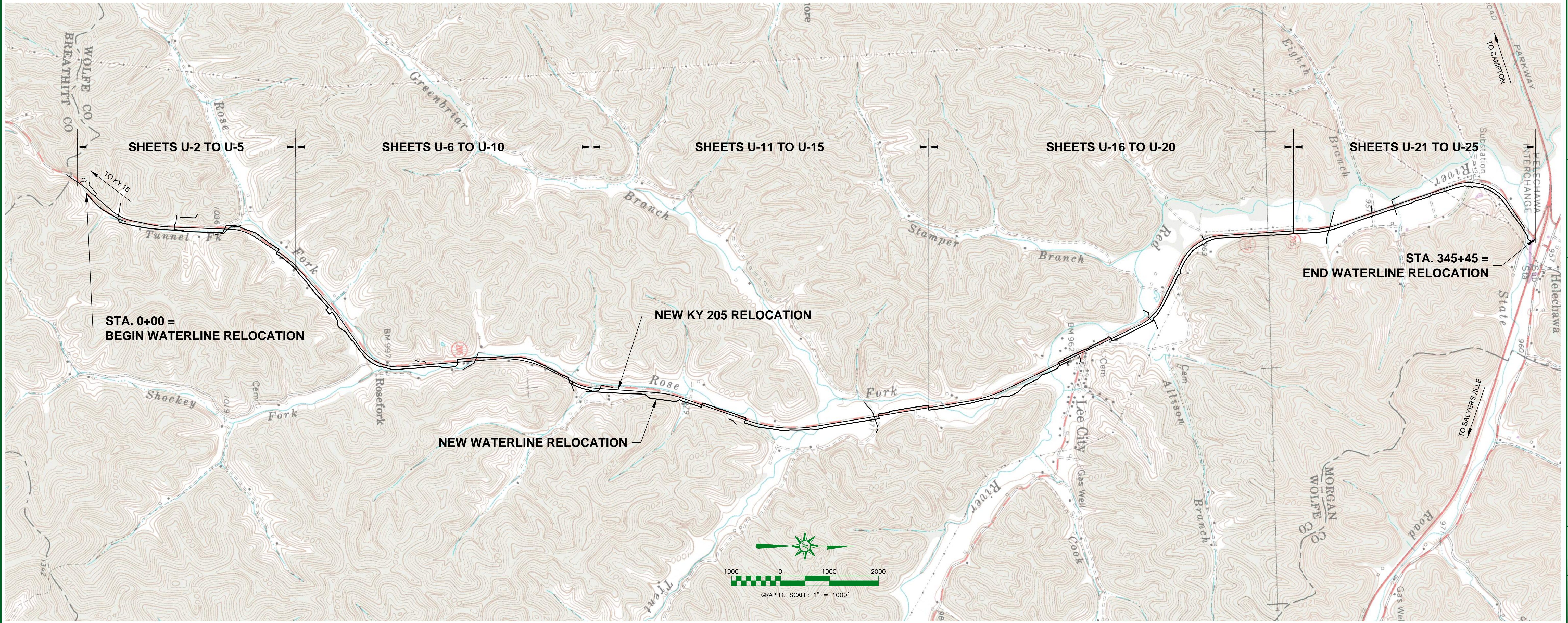
CITY OF CAMPTON WATERWORKS
KY 205 WATERLINE RELOCATION

drawn by: JCW
date: 2-27-15

sheet no. U-1

- GENERAL NOTES:
- CHANNEL CHANGE CONSTRUCTION (BY OTHERS) AT KY 205 STA. 110+20 TO 111+40, LEFT (SHEET U-2); STA. 111+75 TO STA. 114+00, LEFT (SHEET U-3); STA. 157+50 TO STA. 159+45, LEFT (SHEET U-12) AND STA. 159+50 TO STA. 164+50, LEFT (SHEETS U-12 & U-13); TO BE COMPLETED PRIOR TO PHASE 1 WATERLINE CONSTRUCTION.
 - PHASE 1 WATERLINE CONSTRUCTION; CONSTRUCT WATERLINES PRIOR TO THE RECONSTRUCTION AND WIDENING OF KY 205.
 - PHASE 2 WATERLINE CONSTRUCTION; CONSTRUCT AFTER THE RECONSTRUCTION AND WIDENING OF KY 205.
 - PROFILES HAVE BEEN PROVIDED FOR PHASE 1 WATERLINE CONSTRUCTION. NO PROFILES HAVE BEEN PROVIDED FOR PHASE 2 WATERLINE CONSTRUCTION.
 - UNLESS OTHERWISE NOTED WATERLINES SHALL HAVE A MINIMUM OF 30" COVER FROM FINAL GRADE TO TOP OF PIPE AND A MINIMUM OF 42" COVER IN AREAS LOCATED UNDERNEATH DITCHES AND ROAD CROSSINGS.
 - WHEN PHASE 2 WATERLINE CONSTRUCTION IS OPERATIONAL, PORTIONS OF PHASE 1 WATERLINE WILL BE ABANDONED.
 - ALL CHANGES IN EITHER VERTICAL OR HORIZONTAL DIRECTION, NEW VALVES, FITTINGS, HYDRANTS, ETC. TO HAVE MECHANICAL RESTRAINED JOINTS.
 - DIRECTIONAL DRILL SITES ARE LISTED AS LUMP SUM WITH AN APPROXIMATE LENGTH SHOWN IN HORIZONTAL FEET, CONTRACTOR SHALL INSPECT EACH SITE FOR SLOPE DIFFERENCES TO DETERMINE ACTUAL PIPE LENGTHS REQUIRED.
 - ALL DUCTILE IRON PIPE SHALL HAVE NITRILE GASKETS WHERE IT IS WITHIN 200 FEET OF AN EXISTING OR ABANDONED FUEL STORAGE TANK.
 - WATERLINE MARKERS ARE NOT SHOWN ON THE PLAN SHEETS AND WILL BE LOCATED IN THE FIELD FOR BEST VISIBILITY. THEY ARE TO BE SPACED NO MORE THAN EVERY 2,000 FEET ALONG THE PERMANENT WATERLINE ROUTE AND AT EACH OF THE MAIN WATERLINE ROAD CROSSINGS.
 - ALL SERVICE LINE SHALL BE HDPE CLASS 200.
 - DIMENSIONS OF EXISTING STRUCTURES, EQUIPMENT, ETC. SHALL BE FIELD CONFIRMED BY THE CONTRACTOR. WHERE CRITICAL DIMENSIONS FOR INSTALLATION OF PROPOSED EQUIPMENT ARE INDICATED ON THE DRAWINGS, THE CONTRACTOR SHALL CONFIRM THESE DIMENSIONS FOR ACTUAL EQUIPMENT FURNISHED. ALL KNOWN DISCREPANCIES SHALL BE REPORTED TO THE ENGINEER.
 - THE CONTRACTOR SHALL CONFINE ALL CONSTRUCTION ACTIVITY TO THE AREA WITHIN EXISTING EASEMENTS AND CONSTRUCTION LIMITS, UNLESS OTHERWISE APPROVED IN WRITING BY THE OWNER. THE CONTRACTOR WILL BE SOLELY LIABLE FOR ANY WORK HE PERFORMS OUTSIDE OF LEGAL EASEMENTS OR CONSTRUCTION LIMITS.
 - THE CONTRACTOR MUST CONTACT ALL UTILITY OWNERS AND HAVE THEM FIELD LOCATE THEIR EXISTING LINES PRIOR TO ANY CONSTRUCTION ACTIVITY.
 - EFFORTS HAVE BEEN MADE TO INDICATE ACCURATE LOCATIONS OF SOME EXISTING STRUCTURES, PIPING AND UTILITIES. HOWEVER THE CONTRACTOR SHALL FAMILIARIZE HIMSELF WITH THE SITE AND OTHER EXISTING CONDITIONS AND NOTIFY THE ENGINEER OF ANY DISCREPANCIES BETWEEN INFORMATION DEPICTED BY THE CONSTRUCTION DRAWINGS AND ACTUAL FIELD CONDITIONS WHICH WOULD SIGNIFICANTLY ALTER THE DESIGN INTENT OF THE CONSTRUCTION DRAWINGS PRIOR TO COMMENCING HIS CONSTRUCTION OPERATIONS. DIMENSIONS OF EXISTING STRUCTURES AND/OR SITE RESTRICTIONS ARE APPROXIMATE. IT IS THE CONTRACTOR'S RESPONSIBILITY TO OBTAIN AND CONFIRM ALL DIMENSIONS AND ELEVATIONS OF EXISTING STRUCTURES AND TOPOGRAPHY IN THE FIELD NECESSARY FOR HIS CONSTRUCTION OPERATION.
 - THE CONTRACTOR SHALL USE ALL POSSIBLE CARE DURING EXCAVATION ON THIS PROJECT SO AS NOT TO DESTROY OR DAMAGE ANY EXISTING UTILITY OR STRUCTURE NOT SCHEDULED FOR DEMOLITION WHETHER DEPICTED OR NOT IN THE CONSTRUCTION DRAWINGS OR ANY DAMAGE TO THE ABOVE MENTIONED ITEMS CAUSED DIRECTLY OR INDIRECTLY BY THE CONTRACTOR SHALL BE REPAIRED OR REPLACED BY THE CONTRACTOR AT NO COST TO THE OWNER TO A CONDITION EQUAL TO OR BETTER THAN THAT WHICH EXISTED PRIOR TO BEING DAMAGED.
 - THE CONTRACTOR SHALL CONTACT AND OBTAIN THE PERMISSION OF EXISTING UTILITY OWNERS 48 HOURS (MIN) PRIOR TO ANY CONSTRUCTION ACTIVITY INTERRUPTING OPERATION OF SAID UTILITY.
 - IT SHALL BE THE CONTRACTOR'S RESPONSIBILITY TO WORK ALL APPLICABLE DRAWINGS AND THE APPROPRIATE SPECIFICATIONS AS A UNIT. ANY OMISSIONS, DELETIONS OR CONFLICTS ARISING AS A RESULT OF FAILURE TO INCORPORATE ALL DRAWINGS AND SPECIFICATIONS WHICH APPLY SHALL BE CORRECTED BY THE CONTRACTOR AT NO ADDED COST TO THE OWNER.

KYTC #	PHASE 1 - Description	Item	U-2	U-3A	U-3B	U-4A	U-4B	U-5A	U-5B	U-6A	U-6B	U-7A	U-7B	U-8A	U-8B	U-9A	U-9B	U-10A	U-10B	U-11A	U-11B	U-12A	U-12B	U-13A	U-13B	U-14	Project	
			Quantity	Quantity	Quantity	Quantity	Quantity	Quantity	Quantity	Quantity	Quantity	Quantity	Quantity	Quantity	Quantity	Quantity	Quantity	Quantity	Quantity	Quantity	Quantity	Quantity	Quantity	Quantity	Quantity	Quantity	Totals	
14059	6" SDR17 PVC Waterline	LF	500	1,500	1,500	1,500	1,500	1,420	1,311	1,461	1,500	1,500	1,500	1,420	1,420	1,500	1,335	1,250	1,675	1,500	1,500	1,500	1,500	1,500	1,500	1,101	33,893	
14036	6" Ductile Iron Push-on Joint Waterline with Nitrile Gaskets	LF																	390								390	
14004	8" HDPE DR9 Waterline, Directional Drill Creek Crossing	LF						120	225	120				120	120		240	270								120	1,335	
14057	3" SDR17 PVC Waterline	LF						45																			45	
14085	3/4" HDPE Class 200 Service Line - Service Short Side 3/4"	EA	3	2	1	6	3	5	4	1	1	3	1	3	1	3	5	4	7			1			2	2	62	
14080	3/4" HDPE Class 200 Service Line - Service Long Side 3/4"	EA	1	1	1					1	1	1	1	2			1	1			1	2				1	16	
14008	10.75" Sch. 40 Steel Casing Pipe, Bore & Jack	LF			120	70				95	100		90	80		130		70	50							150	1,025	
14014	10.75" Sch. 40 Steel Casing Pipe, Open Cut	LF		20		20		80	20	20	120	20	50	20		80	20		30	20	40	40	20		20	0	640	
14014	12" PVC Casing Pipe (includes carrier pipe), Open Cut	LF		130		50	95			35														20			330	
14001	3/4" Combination Air Release Valve Assembly	EA	1	1			1	1	1	1	1	1	1	1		1		2				1	1		1	1	17	
14022	Flush Hydrant Assembly, Type 1	EA	1		1				1	1				1							1						1	6
14105	6" D.I.M.J. Gate Valve & Box	EA	1	1	2		2	2	2	3	1		2	3	2	2	6	4	7	2	4			2	2	4	54	
14103	3" D.I.M.J. Gate Valve & Box	EA			1			1																			2	
14028	Water Meter	EA	4	3	2			1	1	2				1	1		2	2								1	20	
14130	Water Meter with Individual Pressure Reducer (IPRV)	EA				6	4	2	4	3	2	4	2	4		3	4	3	7	1	3			2	2	2	58	
14003	Cap Existing Main	EA																									1	1
14144	Waterline Marker	EA	1	1	2	2	1	1	1	2	1	1	2	2	1	4	1	2	2	1	1	1	1	1	1	3	36	
14094	6" Waterline Tie-In	EA																	1						1		1	3
14092	3" Waterline Tie-In	EA			1			1																			2	
			U-2	U-3A	U-3B	U-4A	U-4B	U-5A	U-5B	U-6A	U-6B	U-7A	U-7B	U-8A	U-8B	U-9A	U-9B	U-10A	U-10B	U-11A	U-11B	U-12A	U-12B	U-13A	U-13B	U-14	Project	
			Quantity	Quantity	Quantity	Quantity	Quantity	Quantity	Quantity	Quantity	Quantity	Quantity	Quantity	Quantity	Quantity	Quantity	Quantity	Quantity	Quantity	Quantity	Quantity	Quantity	Quantity	Quantity	Quantity	Quantity	Totals	
KYTC #	PHASE 2 - Description	Item																										
14059	6" SDR17 PVC Waterline	LF		1,120	1,055		115											295	965	265	325	205			60	4,405		
14036	6" Ductile Iron Push-on Joint Waterline with Nitrile Gaskets	LF																		195							195	
14080	3/4" HDPE Class 200 Service Line - Service Long Side 3/4"	EA	1							1																	2	
14001	3/4" Combination Air Release Valve Assembly	EA			1																						1	
14022	Flush Hydrant Assembly, Type 1	EA		1		1																					10	
14030	Water Meter Relocate	EA	2																								2	
14003	Cap Existing Main	EA		1	1		2											1	1	6	2	4			1		19	
	NOTE:																											



LAST PLOTTED: 11/18/2015
 LAST SAVED: 11/18/2015 10:48:40

11-18-2015 REVISED UNITS AND QUANTITIES FOR DIRECTIONAL DRILL CREEK CROSSING

CITY OF CAMPTON WATERWORKS
 WOLFE COUNTY, KENTUCKY
 RECONSTRUCT AND WIDEN KY 205 10-8101.00
 WATERLINE RELOCATION
 OVERALL LAYOUT AND QUANTITIES

STATE OF KENTUCKY
 WILLIAM
 McCREGOR
 21863
 LICENSED
 PROFESSIONAL ENGINEER

nesbitt engineering, inc.
 providing proven solutions since 1976

CITY OF CAMPTON WATERWORKS
 KY 205 WATERLINE RELOCATION

drawn by: JCW
 date: 2-27-15

sheet no. U-1

PROPOSAL BID ITEMS

REVISED ADDENDUM #2: 11-18-15

151077

Page 1 of 5

Report Date 11/18/15

Section: 0001 - PAVING

LINE	BID CODE	ALT	DESCRIPTION	QUANTITY	UNIT	UNIT PRIC	FP	AMOUNT
0010	00001		DGA BASE	53,464.00	TON		\$	
0020	00020		TRAFFIC BOUND BASE	91.00	TON		\$	
0030	00078		CRUSHED AGGREGATE SIZE NO 2	500.00	TON		\$	
0040	00080		CRUSHED AGGREGATE SIZE NO 23	79,175.00	TON		\$	
0050	00100		ASPHALT SEAL AGGREGATE	553.00	TON		\$	
0060	00103		ASPHALT SEAL COAT	66.00	TON		\$	
0070	00190		LEVELING & WEDGING PG64-22	4,551.00	TON		\$	
0080	00212		CL2 ASPH BASE 1.00D PG64-22	36,760.00	TON		\$	
0090	00221		CL2 ASPH BASE 0.75D PG64-22	1,551.00	TON		\$	
0100	00301		CL2 ASPH SURF 0.38D PG64-22	11,753.00	TON		\$	
0110	02101		CEM CONC ENT PAVEMENT-8 IN	300.00	SQYD		\$	

Section: 0002 - ROADWAY

LINE	BID CODE	ALT	DESCRIPTION	QUANTITY	UNIT	UNIT PRIC	FP	AMOUNT
0340	01000		PERFORATED PIPE-4 IN	213.00	LF		\$	
0350	01002		PERFORATED PIPE-8 IN	1,050.00	LF		\$	
0360	01010		NON-PERFORATED PIPE-4 IN	100.00	LF		\$	
0370	01012		NON-PERFORATED PIPE-8 IN	100.00	LF		\$	
0380	01032		PERF PIPE HEADWALL TY 4-4 IN	1.00	EACH		\$	
0390	01810		STANDARD CURB AND GUTTER	1,287.00	LF		\$	
0400	01891		ISLAND HEADER CURB TYPE 2	350.00	LF		\$	
0410	01982		DELINEATOR FOR GUARDRAIL MONO DIRECTIONAL WHITE	242.00	EACH		\$	
0420	02014		BARRICADE-TYPE III	20.00	EACH		\$	
0430	02159		TEMP DITCH	33,180.00	LF		\$	
0440	02200		ROADWAY EXCAVATION	325,032.00	CUYD		\$	
0450	02242		WATER	6,320.00	MGAL		\$	
0460	02351		GUARDRAIL-STEEL W BEAM-S FACE	17,412.50	LF		\$	
0470	02360		GUARDRAIL TERMINAL SECTION NO 1	44.00	EACH		\$	
0480	02363		GUARDRAIL CONNECTOR TO BRIDGE END TY A	12.00	EACH		\$	
0490	02367		GUARDRAIL END TREATMENT TYPE 1	13.00	EACH		\$	
0500	02371		GUARDRAIL END TREATMENT TYPE 7 14 TEMPORARY	15.00	EACH		\$	
0510	02381		REMOVE GUARDRAIL	5,159.00	LF		\$	
0520	02391		GUARDRAIL END TREATMENT TYPE 4A	7.00	EACH		\$	
0530	02397		TEMP GUARDRAIL	1,525.00	LF		\$	
0540	02429		RIGHT-OF-WAY MONUMENT TYPE 1	321.00	EACH		\$	
0550	02432		WITNESS POST	6.00	EACH		\$	
0560	02475		PLUG WATER WELL 1 UNIT TO BE UTILIZED ON PARCEL 95 WITH THE REMAINING 4 UNIT LOCATIONS TO BE DET	5.00	EACH		\$	
0570	02483		CHANNEL LINING CLASS II	4,374.00	TON		\$	
0580	02484		CHANNEL LINING CLASS III	5,963.00	TON		\$	
0590	02545		CLEARING AND GRUBBING 126.95 ACRES	1.00	LS		\$	

PROPOSAL BID ITEMS

REVISED ADDENDUM #2: 11-18-15

151077

Page 2 of 5

Report Date 11/18/15

LINE	BID CODE	ALT	DESCRIPTION	QUANTITY	UNIT	UNIT PRIC	FP	AMOUNT
0600	02562		TEMPORARY SIGNS	632.00	SQFT		\$	
0610	02585		EDGE KEY	306.00	LF		\$	
0620	02596		FABRIC-GEOTEXTILE TYPE I	2,211.00	SQYD		\$	
0630	02598		FABRIC-GEOTEXTILE TYPE III	1,000.00	SQYD		\$	
0640	02599		FABRIC-GEOTEXTILE TYPE IV	209,812.00	SQYD		\$	
0650	02600		FABRIC GEOTEXTILE TY IV FOR PIPE	3,245.00	SQYD	\$2.00	\$	\$6,490.00
0660	02650		MAINTAIN & CONTROL TRAFFIC	1.00	LS		\$	
0670	02651		DIVERSIONS (BY-PASS DETOURS)	1.00	LS		\$	
0680	02671		PORTABLE CHANGEABLE MESSAGE SIGN	2.00	EACH		\$	
0690	02676		MOBILIZATION FOR MILL & TEXT	1.00	LS		\$	
0700	02677		ASPHALT PAVE MILLING & TEXTURING	2,481.00	TON		\$	
0710	02690		SAFELOADING	45.00	CUYD		\$	
0720	02701		TEMP SILT FENCE	33,180.00	LF		\$	
0730	02703		SILT TRAP TYPE A	127.00	EACH		\$	
0740	02704		SILT TRAP TYPE B	127.00	EACH		\$	
0750	02705		SILT TRAP TYPE C	127.00	EACH		\$	
0760	02706		CLEAN SILT TRAP TYPE A	381.00	EACH		\$	
0770	02707		CLEAN SILT TRAP TYPE B	381.00	EACH		\$	
0780	02708		CLEAN SILT TRAP TYPE C	381.00	EACH		\$	
0790	02726		STAKING	1.00	LS		\$	
0800	05950		EROSION CONTROL BLANKET	22,763.00	SQYD		\$	
0810	05952		TEMP MULCH	263,306.00	SQYD		\$	
0820	05953		TEMP SEEDING AND PROTECTION	131,653.00	SQYD		\$	
0830	05963		INITIAL FERTILIZER	3.00	TON		\$	
0840	05964		20-10-10 FERTILIZER	3.00	TON		\$	
0850	05985		SEEDING AND PROTECTION	263,306.00	SQYD		\$	
0860	05992		AGRICULTURAL LIMESTONE	19.74	TON		\$	
0870	06510		PAVE STRIPING-TEMP PAINT-4 IN	129,840.00	LF		\$	
0880	06514		PAVE STRIPING-PERM PAINT-4 IN	109,113.00	LF		\$	
0890	06568		PAVE MARKING-THERMO STOP BAR-24IN	267.00	LF		\$	
0900	06588		PAVEMENT MARKER TY IVA-BY TEMP	199.00	EACH		\$	
0910	08019		CYCLOPEAN STONE RIP RAP	3,938.00	TON		\$	
0920	10020NS		FUEL ADJUSTMENT	152,713.00	DOLL	\$1.00	\$	\$152,713.00
0930	10030NS		ASPHALT ADJUSTMENT	131,462.00	DOLL	\$1.00	\$	\$131,462.00
0940	20071EC		JOINT ADHESIVE	32,715.00	LF		\$	
0950	20362ES403		SHOULDER RUMBLE STRIPS-SAWED	62,463.00	LF		\$	
0960	20458ES403		CENTERLINE RUMBLE STRIPS	30,898.00	LF		\$	
0970	24425EC		REMOVE PIPE	1.00	LS		\$	
0980	24540		R/W MONUMENT TYPE 3	7.00	EACH		\$	
0990	24814EC		PIPELINE INSPECTION	5,449.00	LF		\$	
1000	24836ED		CULVERT PIPE-64 IN X 43 IN CMP ARCH 54 INCH EQUIV	56.00	LF		\$	
1010	24837ED		CULVERT PIPE-71 IN X 47 IN CMP ARCH 60 IN EQUIV- STA. 311+32.11	43.00	LF		\$	
1020	24837ED		CULVERT PIPE-71 IN X 47 IN CMP ARCH 60 IN EQUIV-STA. 22+72.60	62.00	LF		\$	

Section: 0003 - DRAINAGE

LINE	BID CODE	ALT	DESCRIPTION	QUANTITY	UNIT	UNIT PRIC	FP	AMOUNT
------	----------	-----	-------------	----------	------	-----------	----	--------

PROPOSAL BID ITEMS

151077

Report Date 11/18/15

LINE	BID CODE	ALT	DESCRIPTION	QUANTITY	UNIT	UNIT PRIC	FP	AMOUNT
1030	00440		ENTRANCE PIPE-15 IN	295.00	LF		\$	
1040	00441		ENTRANCE PIPE-18 IN	627.00	LF		\$	
1050	00443		ENTRANCE PIPE-24 IN	276.00	LF		\$	
1060	00445		ENTRANCE PIPE-30 IN	50.00	LF		\$	
1070	00462		CULVERT PIPE-18 IN	348.00	LF		\$	
1080	00464		CULVERT PIPE-24 IN	1,908.50	LF		\$	
1090	00466		CULVERT PIPE-30 IN	654.50	LF		\$	
1100	00468		CULVERT PIPE-36 IN	131.00	LF		\$	
1110	00492		CULVERT PIPE-24 IN EQUIV	86.00	LF		\$	
1120	00494		CULVERT PIPE-30 IN EQUIV	501.00	LF		\$	
1130	00498		CULVERT PIPE-42 IN EQUIV	90.00	LF		\$	
1140	00521		STORM SEWER PIPE-15 IN	382.00	LF		\$	
1150	00522		STORM SEWER PIPE-18 IN	778.00	LF		\$	
1160	00524		STORM SEWER PIPE-24 IN	289.00	LF		\$	
1170	00526		STORM SEWER PIPE-30 IN	84.00	LF		\$	
1180	01204		PIPE CULVERT HEADWALL-18 IN	4.00	EACH		\$	
1190	01208		PIPE CULVERT HEADWALL-24 IN	19.00	EACH		\$	
1200	01209		PIPE CULVERT HEADWALL-24 IN EQUIV	2.00	EACH		\$	
1210	01210		PIPE CULVERT HEADWALL-30 IN	15.00	EACH		\$	
1220	01211		PIPE CULVERT HEADWALL-30 IN EQUIV	12.00	EACH		\$	
1230	01212		PIPE CULVERT HEADWALL-36 IN	1.00	EACH		\$	
1240	01215		PIPE CULVERT HEADWALL-42 IN EQUIV	2.00	EACH		\$	
1250	01221		PIPE CULVERT HEADWALL-60 IN EQUIV	1.00	EACH		\$	
1260	01374		METAL END SECTION TY 1-30 IN	2.00	EACH		\$	
1270	01433		SLOPED BOX OUTLET TYPE 1-18 IN	7.00	EACH		\$	
1280	01434		SLOPED BOX OUTLET TYPE 1-24 IN	23.00	EACH		\$	
1290	01452		S & F BOX INLET-OUTLET-30 IN	4.00	EACH		\$	
1300	01453		S & F BOX INLET-OUTLET-36 IN	1.00	EACH		\$	
1310	01456		CURB BOX INLET TYPE A	5.00	EACH		\$	
1320	01490		DROP BOX INLET TYPE 1	3.00	EACH		\$	
1330	01544		DROP BOX INLET TYPE 11	5.00	EACH		\$	
1340	01756		MANHOLE TYPE A	3.00	EACH		\$	
1350	20694EN		ALUMINUM STRUCTURAL PLATE BOX CULVERT STA. 34+49.88 (105 IN X 30 IN)	36.00	LF		\$	
1360	24575ES610		HEADWALL 24 INCH	4.00	EACH		\$	
1370	24575ES610		HEADWALL DOUBLE 36 IN	2.00	EACH		\$	

Section: 0004 - BRIDGE-CULVERT 26745

LINE	BID CODE	ALT	DESCRIPTION	QUANTITY	UNIT	UNIT PRIC	FP	AMOUNT
1380	08003		FOUNDATION PREPARATION	1.00	LS		\$	
1390	08100		CONCRETE-CLASS A STA. 134+19.43 RCBC, 12' X 6.5' RCBC	128.90	CUYD		\$	
1400	08150		STEEL REINFORCEMENT	16,323.00	LB		\$	

Section: 0005 - BRIDGE-CULVERT 26782

PROPOSAL BID ITEMS

151077

Page 4 of 5

Report Date 11/18/15

Section: 0000 - BRIDGE-CULVERT 26782

LINE	BID CODE	ALT	DESCRIPTION	QUANTITY	UNIT	UNIT PRIC	FP	AMOUNT
1410	02403		REMOVE CONCRETE MASONRY	22.00	CUYD		\$	
1420	08002		STRUCTURE EXCAV-SOLID ROCK	5.00	CUYD		\$	
1430	08003		FOUNDATION PREPARATION	1.00	LS		\$	
1440	08100		CONCRETE-CLASS A STA. 45+47.85, 6' X 5' RCBC EXTENSION	71.90	CUYD		\$	
1450	08150		STEEL REINFORCEMENT	9,781.00	LB		\$	

Section: 0006 - BRIDGE-CULVERT 26783

LINE	BID CODE	ALT	DESCRIPTION	QUANTITY	UNIT	UNIT PRIC	FP	AMOUNT
1460	02403		REMOVE CONCRETE MASONRY	20.00	CUYD		\$	
1470	08002		STRUCTURE EXCAV-SOLID ROCK	140.00	CUYD		\$	
1480	08003		FOUNDATION PREPARATION	1.00	LS		\$	
1490	08100		CONCRETE-CLASS A STA. 87+80.99, 15' X 5' RCBC EXTENSION	73.00	CUYD		\$	
1500	08150		STEEL REINFORCEMENT	11,837.00	LB		\$	

Section: 0007 - BRIDGE-CULVERT 26784

LINE	BID CODE	ALT	DESCRIPTION	QUANTITY	UNIT	UNIT PRIC	FP	AMOUNT
1510	02403		REMOVE CONCRETE MASONRY	69.00	CUYD		\$	
1520	08003		FOUNDATION PREPARATION	1.00	LS		\$	
1530	08100		CONCRETE-CLASS A STA. 107+53.90, DOUBLE 10' X 9' RCBC EXTENSION	232.10	CUYD		\$	
1540	08150		STEEL REINFORCEMENT	24,356.00	LB		\$	

Section: 0008 - BRIDGE-CULVERT 27105

LINE	BID CODE	ALT	DESCRIPTION	QUANTITY	UNIT	UNIT PRIC	FP	AMOUNT
1550	08003		FOUNDATION PREPARATION	1.00	LS		\$	
1560	08100		CONCRETE-CLASS A STA. 251+79.87, 12' X 5' RCBC	136.20	CUYD		\$	
1570	08150		STEEL REINFORCEMENT	21,899.00	LB		\$	

Section: 0009 - SIGNING

LINE	BID CODE	ALT	DESCRIPTION	QUANTITY	UNIT	UNIT PRIC	FP	AMOUNT
1580	06407		SBM ALUM SHEET SIGNS .125 IN	571.10	SQFT		\$	
1590	06410		STEEL POST TYPE 1	1,068.00	LF		\$	
1600	24631EC		BARCODE SIGN INVENTORY	128.00	EACH		\$	

Section: 0010 - WATERLINE

PROPOSAL BID ITEMS

151077

Page 5 of 5

Report Date 11/18/15

LINE	BID CODE	ALT	DESCRIPTION	QUANTITY	UNIT	UNIT PRIC	FP	AMOUNT
0120	14001		W AIR RELEASE VALVE 3/4 INCH 3/4" COMBINATION AIR RELEASE VALVE ASSEMBLY	18.00	EACH		\$	
0130	14003		W CAP EXISTING MAIN	20.00	EACH		\$	
0140	14004		W DIRECTIONAL BORE 8" HDPE DR9 WATERLINE, DIRECTIONAL DRILL CREEK CROSSING (REVISED: 11-18-15)	1,335.00	LF		\$	
0150	14008		W ENCASEMENT STEEL BORED RANGE 3 10.75" SCH 40 STEEL CASING PIPE, BORE & JACK	1,025.00	LF		\$	
0160	14014		W ENCASEMENT STEEL OPEN CUT RANGE 3 10.75" SCH 40 STEEL CASING PIPE, OPEN CUT	640.00	LF		\$	
0170	14014		W ENCASEMENT STEEL OPEN CUT RANGE 3 12" PVC CASING PIPE (INCLUDES CARRIER PIPE), OPEN CUT	330.00	LF		\$	
0180	14022		W FLUSH HYDRANT ASSEMBLY FLUSH HYDRANT ASSEMBLY, TYPE 1	16.00	EACH		\$	
0190	14028		W METER 3/4 INCH WATER METER	20.00	EACH		\$	
0200	14030		W METER RELOCATE	2.00	EACH		\$	
0210	14036		W PIPE DUCTILE IRON 06 INCH 6" DUCTILE IRON PUSH-ON JOINT WATERLINE WITH NITRILE GASKETS	585.00	LF		\$	
0220	14057		W PIPE PVC 03 INCH 3" SDR17 PVC WATERLINE	45.00	LF		\$	
0230	14059		W PIPE PVC 06 INCH 6" SDR17 PVC WATERLINE	38,298.00	LF		\$	
0240	14080		W SERV PE/PLST LONG SIDE 3/4 IN 3/4" HDPE CLASS 200 SERVICE LINE - SERVICE LONG SIDE 3/4"	18.00	EACH		\$	
0250	14085		W SERV PE/PLST SHORT SIDE 3/4 IN 3/4" HDPE CLASS 200 SERVICE LINE - SERVICES SHORT SIDE 3/4"	62.00	EACH		\$	
0260	14092		W TIE-IN 03 INCH	2.00	EACH		\$	
0270	14094		W TIE-IN 06 INCH	3.00	EACH		\$	
0280	14103		W VALVE 03 INCH 3" DIMJ GATE VALVE & BOX	2.00	EACH		\$	
0290	14105		W VALVE 06 INCH 6" DIMJ GATE VALVE & BOX	54.00	EACH		\$	
0300	14130		W METER WITH PRV 3/4 INCH	58.00	EACH		\$	
0310	14144		W LINE MARKER	36.00	EACH		\$	

Section: 0011 - DEMOBILIZATION &/OR MOBILIZATION

LINE	BID CODE	ALT	DESCRIPTION	QUANTITY	UNIT	UNIT PRIC	FP	AMOUNT
0320	02568		MOBILIZATION	1.00	LS		\$	
0330	02569		DEMOBILIZATION	1.00	LS		\$	